

# MONTHLY MEMBERSHIP PROGRESS REPORT

District 325 E

Results as of: 10/31/2024

GMT:

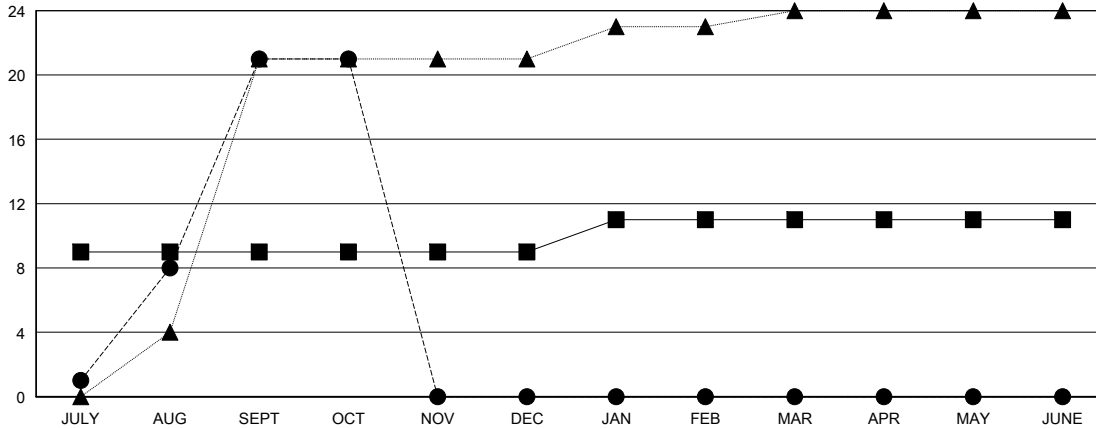
LOCATION NEPAL

GMT CA

Clubs			
RESULTS FOR 2024-2025			
QUARTER	NEW CLUB GOAL	NEW CLUBS	DROPPED CLUBS
JULY/AUG/SEPT	9	21	2
OCT/NOV/DEC	0	0	0
JAN/FEB/MAR	2	0	0
APR/MAY/JUNE	0	0	0

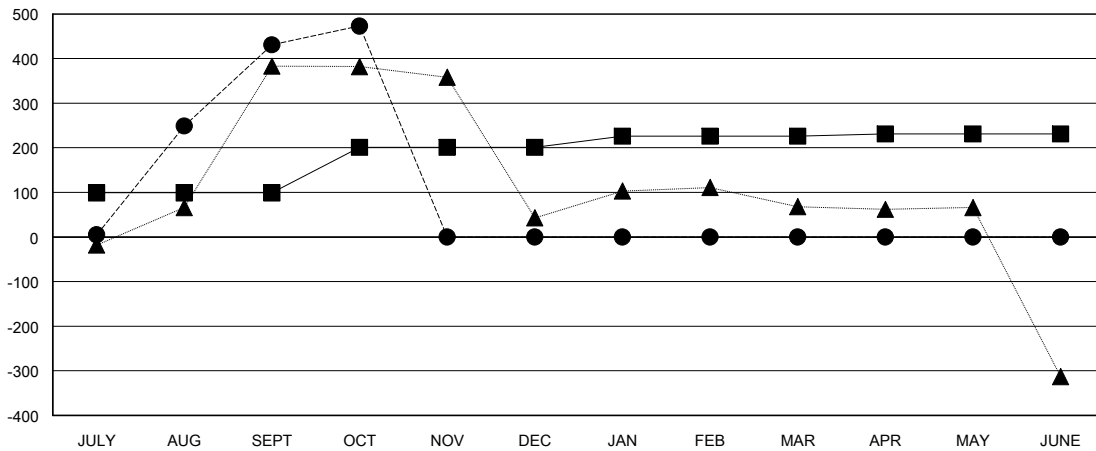
Members			
RESULTS FOR 2024-2025			
QUARTER	MEMBER GROWTH NET GOAL	MEMBER GROWTH ACTUAL	DROPPED MEMBERS ACTUAL (including transfers)
JULY/AUG/SEPT	99	559	108
OCT/NOV/DEC	102	52	2
JAN/FEB/MAR	25	0	0
APR/MAY/JUNE	5	0	0

GOALS AND ACTUAL NEW CLUBS CUMULATIVE



- - CURRENT YEAR GOALS FOR NEW CLUBS
- - CURRENT YEAR ACTUAL NEW CLUBS
- ▲ - LAST YEAR ACTUAL NEW CLUBS

GOALS AND ACTUAL MEMBERS CUMULATIVE



- - MEMBER GROWTH NET GOAL
- - MEMBER GROWTH ACTUAL
- ▲ - LAST YEAR MEMBERSHIP ACTUAL

DROPPED CLUBS: 2	
<b>DROPPED MEMBERS</b>	
DECEASED	1
CLUB CANCELLED	18
OTHER	90
<b>TOTAL</b>	<b>109</b>

64 CLUBS OF 124 ADDED 1 OR MORE NEW MEMBERS

GENDER DISTRIBUTION	
MALE	1,509 (65.27%)
FEMALE	803 (34.73%)

[CLICK HERE FOR CUMULATIVE MEMBERSHIP DATA](#)

TOTAL FAMILY UNIT MEMBERS	0
FAMILY MEMBERS PAYING HALF DUES	0